



## Series

GS AxxxxYB1: ½", 2-way, NPT female

GS BxxxxYB1: ¾", 2-way, NPT female

GS CxxxxYB1: 1", 2-way, NPT female

GS DxxxxYB1: 1-¼", 2-way, NPT female

GS ExxxxYB1: 1-½", 2-way, NPT female

GS FxxxxYB1: 2", 2-way, NPT female



## Features

- Compatible with both digital and analog input signals
- High-Force Linear Actuation
- For hot/chilled water, up to 50% glycol, and 15 PSI saturated steam
- Delivers up to 100 lbs (450 N) of force at rated voltage.
- Optional DDSTM kit protects actuator from steam heat (The kit is available separately and factory installed)

## Models

Size	2-Way Models	Cv	Kv	Close Off PSI
½"	GS A0004YB1	0.4	0.3	250
	GS A0013YB1	1.3	1.1	250
	GS A0022YB1	2.2	1.9	250
	GS A0044YB1	4.4	3.8	250
¾"	GS B0055YB1	5.5	4.7	180
	GS B0075YB1	7.5	6.4	180
1"	GS C0100YB1	10	8	100
	GS C0140YB1	14	12	100
1-¼"	GS D0200YB1	20	17	65
1-½"	GS E0280YB1	28	24	45
2"	GS F0400YB1	40	34	25

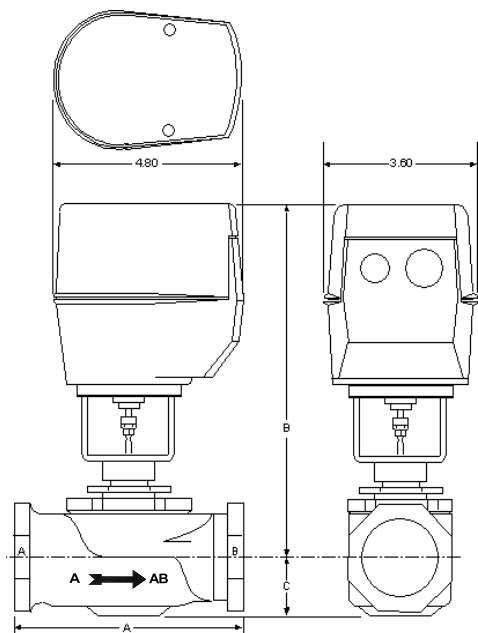
## Technical Data

Specification		All Models
Actuator Compatibility		All Neptronic AT & AM series actuators
Sizes		½" to 2"
Range Cv [Kv]		0.4 to 40 [0.3 to 34]
Fluid Temperature		<b>Water:</b> +40°F to +281°F (+4°C to +138°C) <b>Steam:</b> +230°F (+110°C) Maximum ( <i>For steam application, add <a href="#">BBDDSTM</a>.</i> )
Valve Flow Type		2 Way: Equal Percentage
Static Pressure		Water: 250 PSIG Maximum
Inlet Pressure		Steam: 15 PSIG Maximum
Maximum Differential Pressure		Water: 10 PSIG Recommended, (35 PSIG Maximum) Steam: 15 PSIG Maximum
Materials	Body & Seat	Bronze ANSI B16.15 Class 250
	Stem	Stainless Steel
	Plug	Brass
	Packing	Spring Loaded Teflon Cone
End Connections		Standard NPT Female



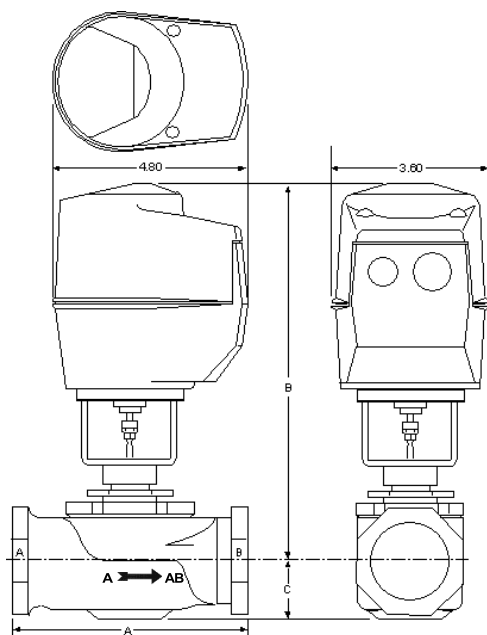
## Dimensions

### 2 Way, 1/2" - 2" NPT with AT Actuators



Valve Size	Valve Model Prefix	A	B	C
1/2"	GS A0004YB1	3.00	7.16	1.06
1/2"	GS A0013YB1	3.00	7.16	1.06
1/2"	GS A0022YB1	3.00	7.16	1.06
1/2"	GS A0044YB1	3.00	7.16	1.06
3/4"	GS B0055YB1	3.63	7.16	1.06
3/4"	GS B0075YB1	3.63	7.16	1.06
1"	GS C0100YB1	4.63	7.84	1.13
1"	GS C0140YB1	4.63	7.84	1.13
1-1/4"	GS D0200YB1	4.63	7.84	1.38
1-1/2"	GS E0280YB1	5.38	7.91	1.50
2"	GS F0400YB1	6.13	8.16	1.56

### 2 Way, 1/2" - 2" NPT with AM Actuators



Valve Size	Valve Model Prefix	A	B	C
1/2"	GS A0004YB1	3.00	8.16	1.06
1/2"	GS A0013YB1	3.00	8.16	1.06
1/2"	GS A0022YB1	3.00	8.16	1.06
1/2"	GS A0044YB1	3.00	8.16	1.06
3/4"	GS B0055YB1	3.63	8.16	1.06
3/4"	GS B0075YB1	3.63	8.16	1.06
1"	GS C0100YB1	4.63	8.84	1.13
1"	GS C0140YB1	4.63	8.84	1.13
1-1/4"	GS D0200YB1	4.63	8.84	1.38
1-1/2"	GS E0280YB1	5.38	8.91	1.50
2"	GS F0400YB1	6.13	9.16	1.56

**Note:** All dimensions are measured in inches and may vary depending on the supplier. Changes can occur without prior notice.



Recycling at end of life: please return this product to your Neptronic local distributor for recycling. If you need to find the nearest Neptronic authorized distributor, please consult [www.neptronic.com](http://www.neptronic.com).